

Setting up NFS streaming to the Tomacro limHD200i using haneWIN NFS Server for Windows

7/23/2007

1. Ensure your limHD200i is configured to be on the same network as your PC. Using a static IP address for the limHD200i is highly recommended.
2. With the limHD200i turned on, verify that your Windows PC can see the limHD200i by opening a Windows command shell (do **Start->Run** and enter **cmd** in the box; in the command shell that pops up, type:

```
ping 192.168.1.12
```

(Replace 192.168.1.12 with the actual IP address of your limHD200i.)

If the network link to your limHD200i is working properly, you'll see replies from the limHD200i:

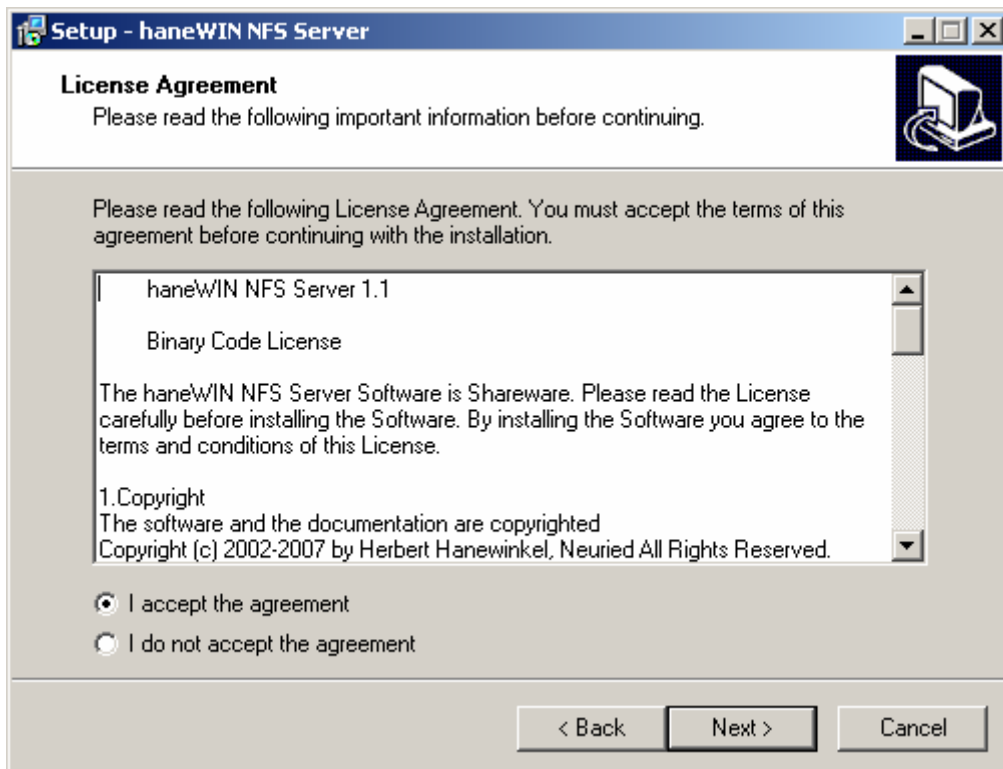
```
Pinging 192.168.1.12 with 32 bytes of data:  
Reply from 192.168.1.12: bytes=32 time=7ms TTL=64  
Reply from 192.168.1.12: bytes=32 time=2ms TTL=64  
Reply from 192.168.1.12: bytes=32 time=1ms TTL=64  
Reply from 192.168.1.12: bytes=32 time=1ms TTL=64
```

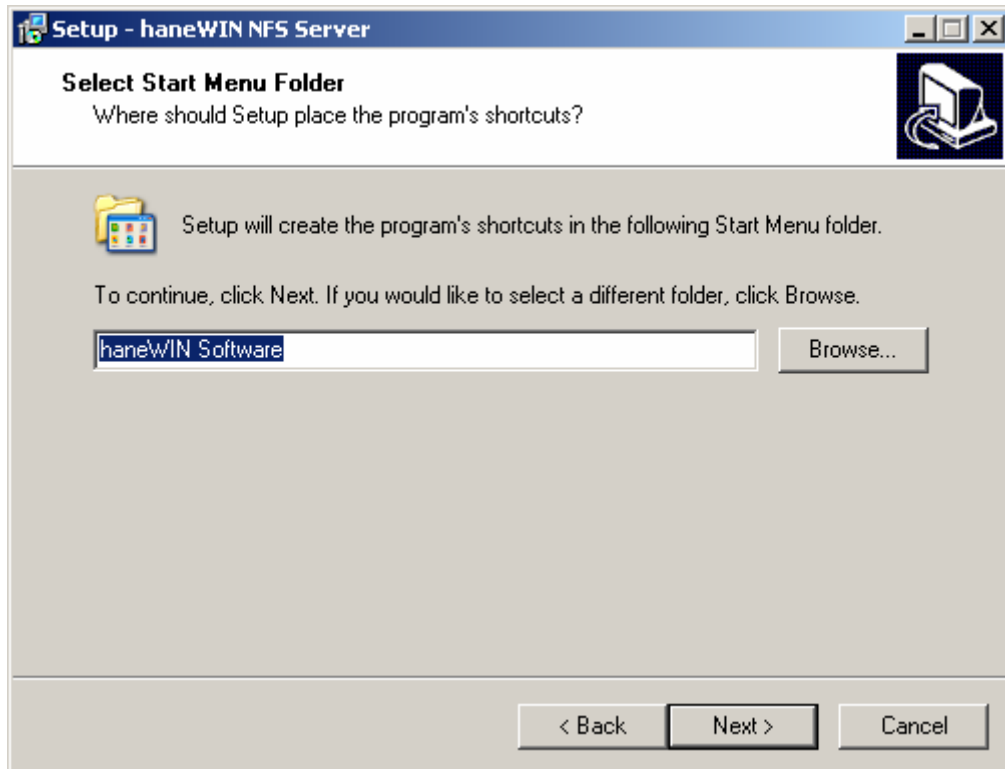
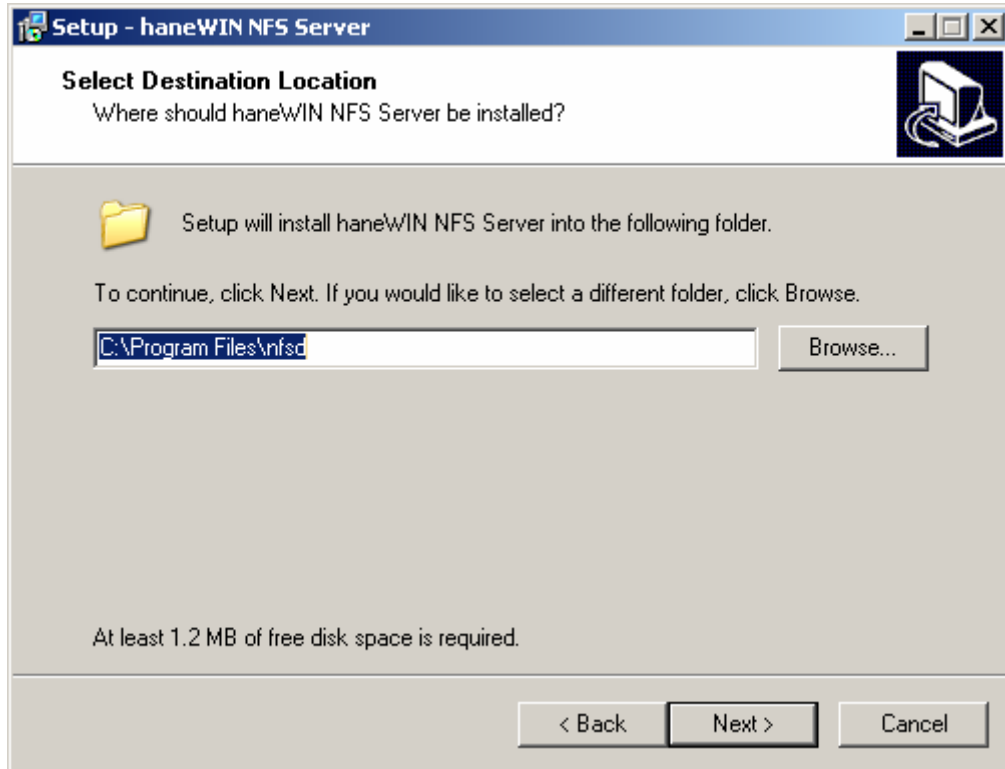
```
Ping statistics for 192.168.1.12:  
Packets: Sent = 4, Received = 4, Lost = 0 (0% loss),  
Approximate round trip times in milli-seconds:  
Minimum = 1ms, Maximum = 7ms, Average = 2ms
```

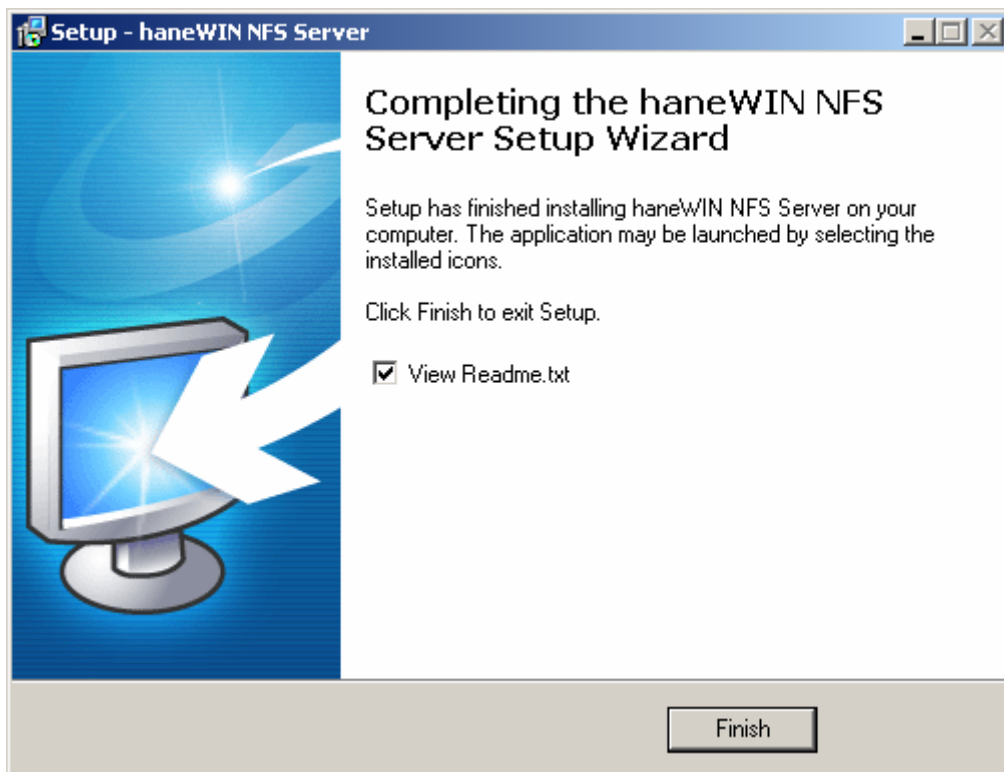
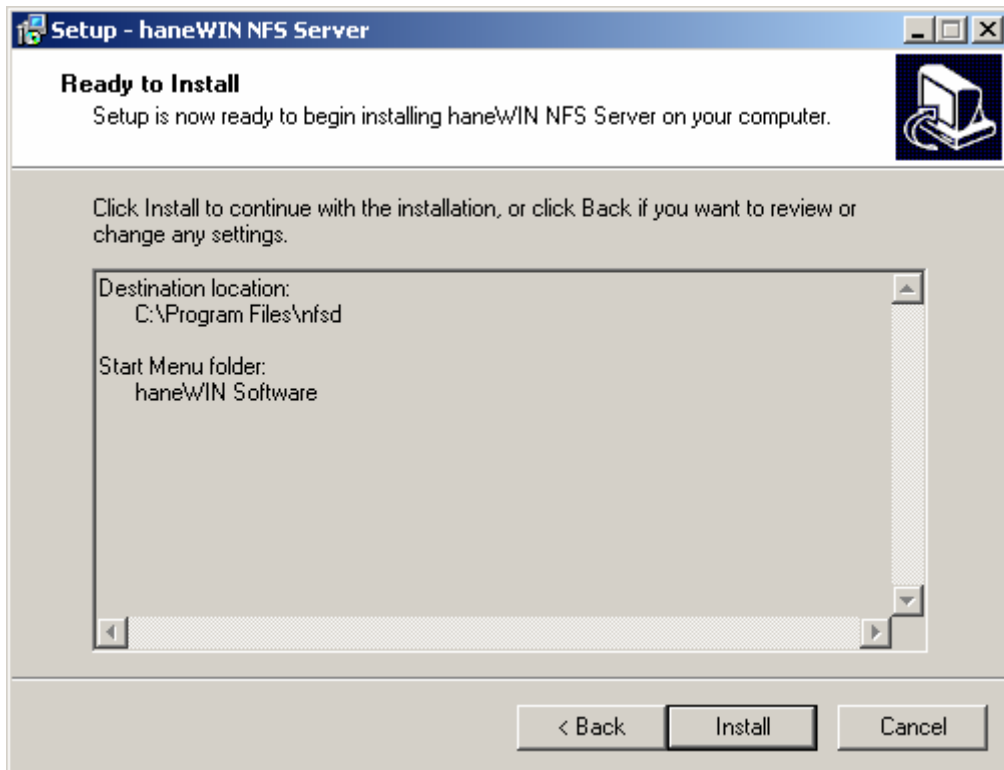
3. On your Windows PC, download and install **haneWIN NFS Server** from <http://www.hanewin.net/nfs-e.htm>

(Download link is [NFS Server 1.1.50](#) along the right-hand side of the page.)

4. Install the software (just accept all default options)





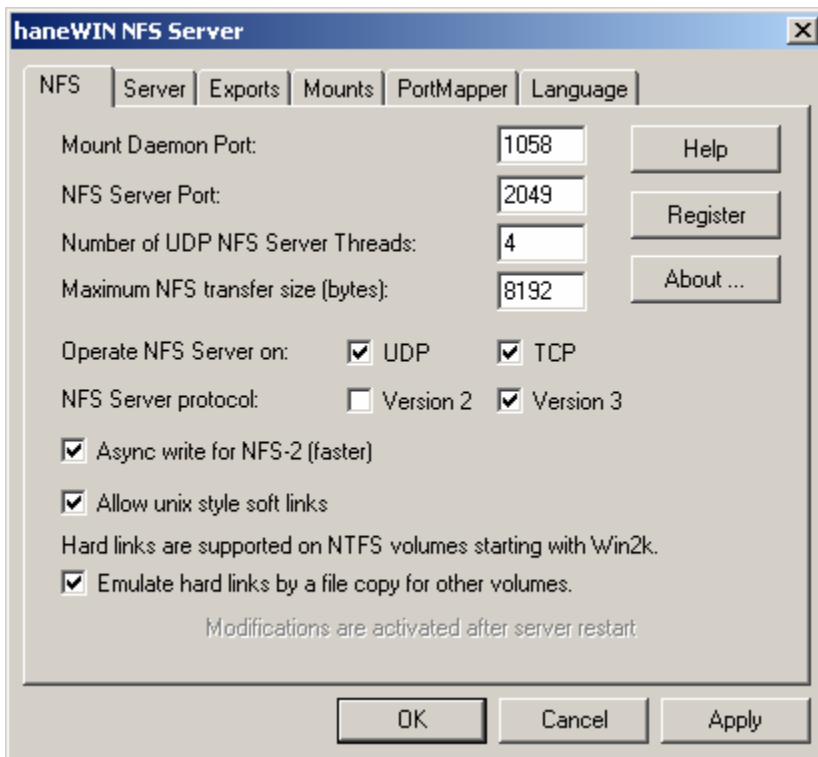


5. Double-click the **NFS Server** shortcut on your desktop
(or run **Start->All Programs->haneWIN Software->NFS->NFS Server**)

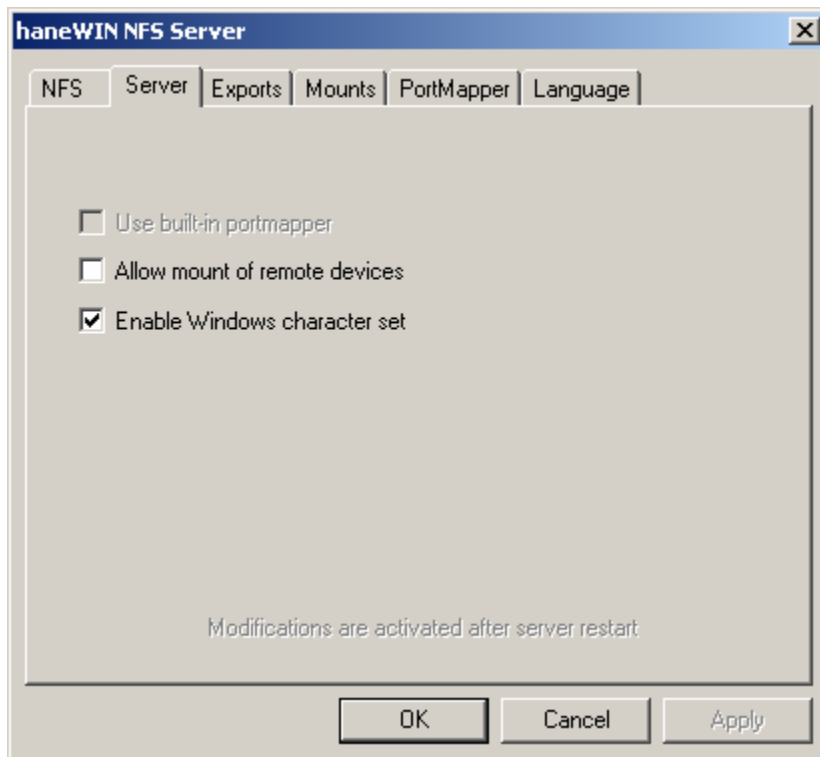


Click OK to dismiss the startup screen.

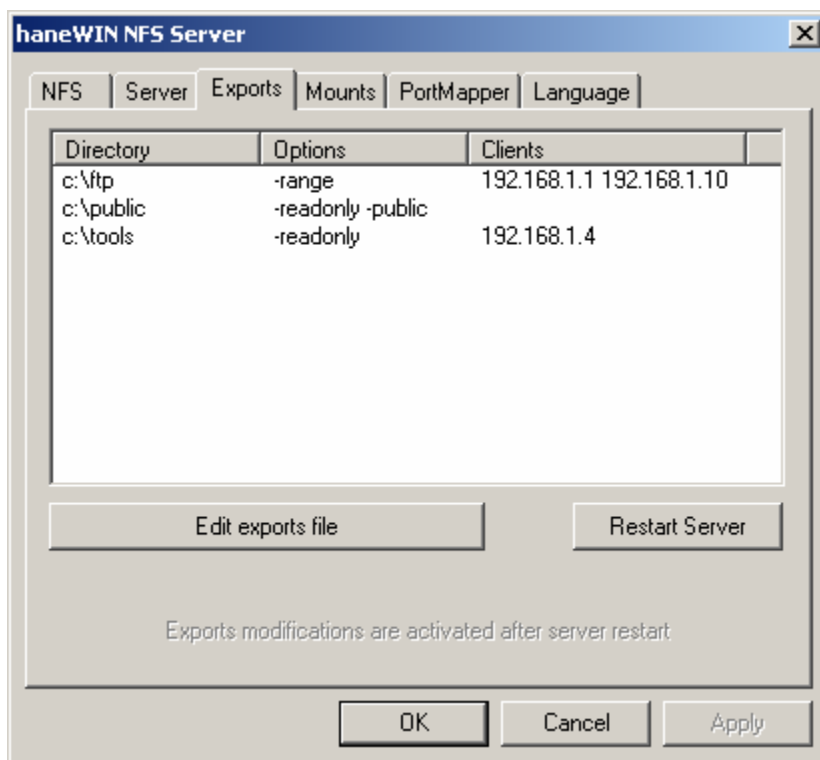
6. On the first page, the NFS tab will be selected.
Halfway down the screen, for NFS Server protocol, **uncheck Version 2**.
Don't click **Apply** or **OK** yet.



7. Click the **Server** tab along the top. Ensure **Enable Windows character set** is checked. Don't click **Apply** or **OK** yet.



8. Click the **Exports** tab along the top.



9. Click the **Edit exports file** button below the list.

10. A Notepad window will pop up to edit the file.

In the Notepad window, press **Ctrl-A** to select all the text, then press the **Delete** button on the keyboard to delete it.

Type or paste this text in there instead:

```
# exports for limHD200i
H:\ -readonly -name:media 192.168.1.12
```

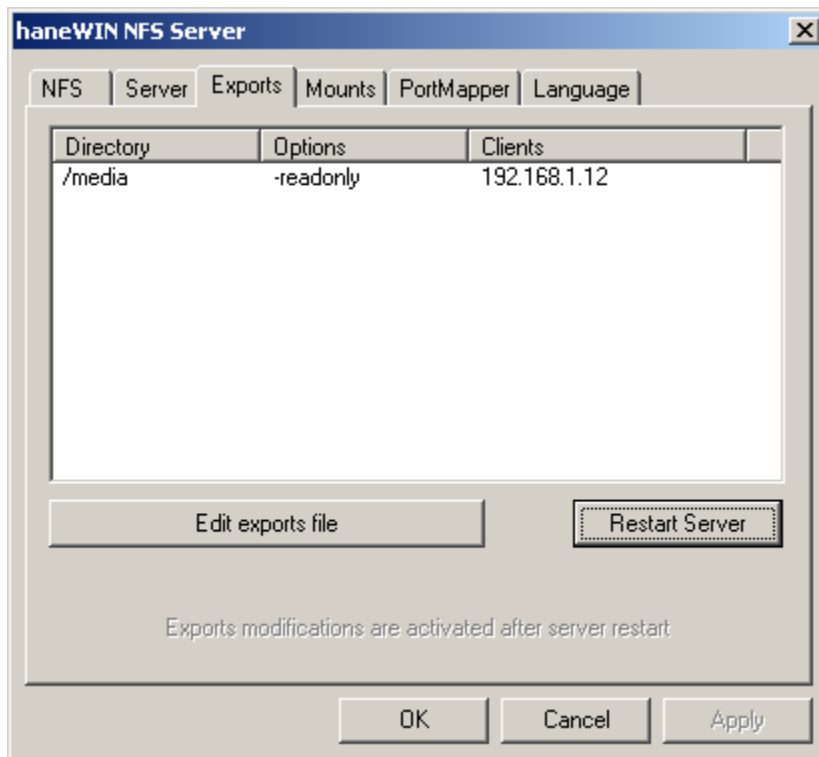
Replace H:\ with the path to your media files.

Replace 192.168.1.12 with the IP address of your limHD200i.

Select **File->Save** and then **File->Exit**

11. Back in the NFS configuration window, click the **Restart Server** button

After a few seconds, the window should change to look like this (the IP address should match that of your limHD200i):



12. You don't have to do anything under the Mounts, PortMapper or Language tabs. Click **Apply** and **OK** to exit the NFS Server configuration screens.

13. Go to the limHD200i and enter the Setup menu (push **Setup** on the remote). Navigate to **Network Path** -> **NFS** and select it.



14. Delete any existing path by press the virtual Back button repeatedly, then enter this path instead (replace 192.168.1.4 with the IP address of your Windows PC running the NFS server):



You're done! From the top-level limHD200i menu, select **NETWORK(NFS)** and you should be able to see your media files.